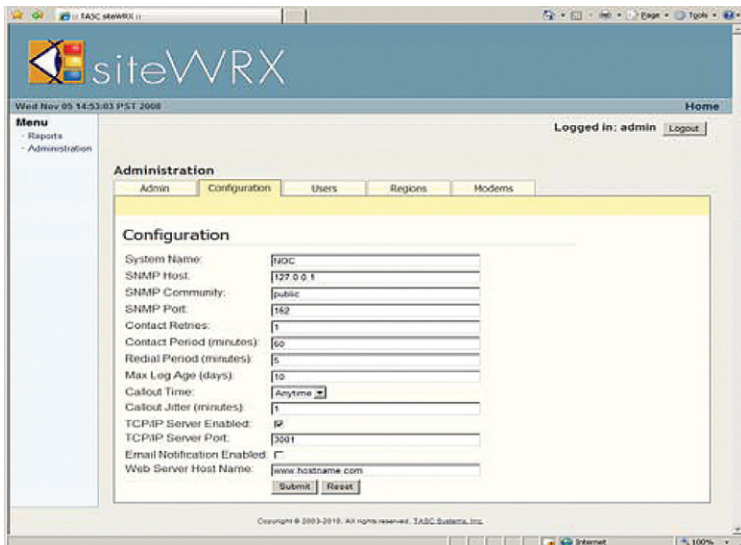




siteWRX

Centralized Alarm Monitoring Software



siteWRX is a powerful software management tool that continuously communicates with remote sitePORTAL Lite unit(s) for alarm reporting and ongoing event logging by means of a modem(s) and/or IP through the servers COM Port(s) and/or Ethernet interface. A pool of modems and/or IP is used to provide the ability for simultaneous communication to multiple remote modules.

Alarm information is gathered by siteWRX from the sitePORTAL Lite modules resulting in SNMP traps being generated and sent to the Network Operations Centre (NOC). The SNMP traps that occur are sent when the sitePORTAL Lite modules are in alarm state, cannot be contacted, or there are problems with passwords.

Key Features:

Web Interface – siteWRX is a simple-to-use graphical interface that is designed to be intuitive. To connect to siteWRX simply start a web browser and enter the IP address or DNS name of the server followed by “/sitewrx”. The active window is refreshed every 30 seconds to insure that up to date information is displayed.

Reports – The three report tabs are: Alarms, Graphs and Logs. The

“Alarm” tab provides information about outstanding alarms from various sites. For instance, a “No Connection” alarm is shown if a particular site cannot be contacted. The “Graphs” tab displays the alarms and connections activity graphically. The “Logs” tab shows the history of connections, errors, logins, and SNMP traps.

Various Levels of User Permissions – User account management can be easily created, edited and deleted for users to only have visibility and editing capabilities within their region(s).

SNMP Trap Notification to a 3rd Party Manager – SNMP V2C traps containing alarm information are sent to third party managers such as HP OpenView.

Client/Server Architecture – siteWRX is a software package that utilizes the Java® 2 Platform Run Time Environment provided by Sun® Microsystem and therefore can operate on any standard PC running Windows XP/Vista/7/Server 2003/2008.

Computer Hardware Requirements

- PC: 1GHz Pentium III or equivalent
- 256MB RAM
- 10GB free hard disk space
- 10/100 Network Interface Card
- Keyboard and Mouse
- At least one free serial (COM) Port
- Modem (s) (one per COM Port)

Computer Software Requirements

- Operating System: Windows XP/Vista/7/Server 2003/2008.
- J2SE® Java Runtime Environment (JRE®)
- Web Browser

TASC Systems Inc.
9415 202 Street
Langley BC
Canada V1M 4B5

T: 604-455-2000
F: 604-888-2712
sales@tascsystems.com
www.tascsystems.com

TASC Systems Inc. is continuously working to improve system performance and expand product capabilities. Specifications are subject to change without notice.
NOTICE: Given the variety of factors that can affect the use and performance of a TASC Systems Product (the “Product”), it is essential that User evaluate the TASC Systems Product and software to determine whether it is suitable for User’s particular purpose and suitable for User’s method of application. TASC Systems’ statements, engineering/technical information, and recommendations are provided for User’s convenience. TASC Systems products and software are not specifically designed for use in “life support” applications. TASC Systems products and software should not be used in such applications without TASC Systems’ express written consent.