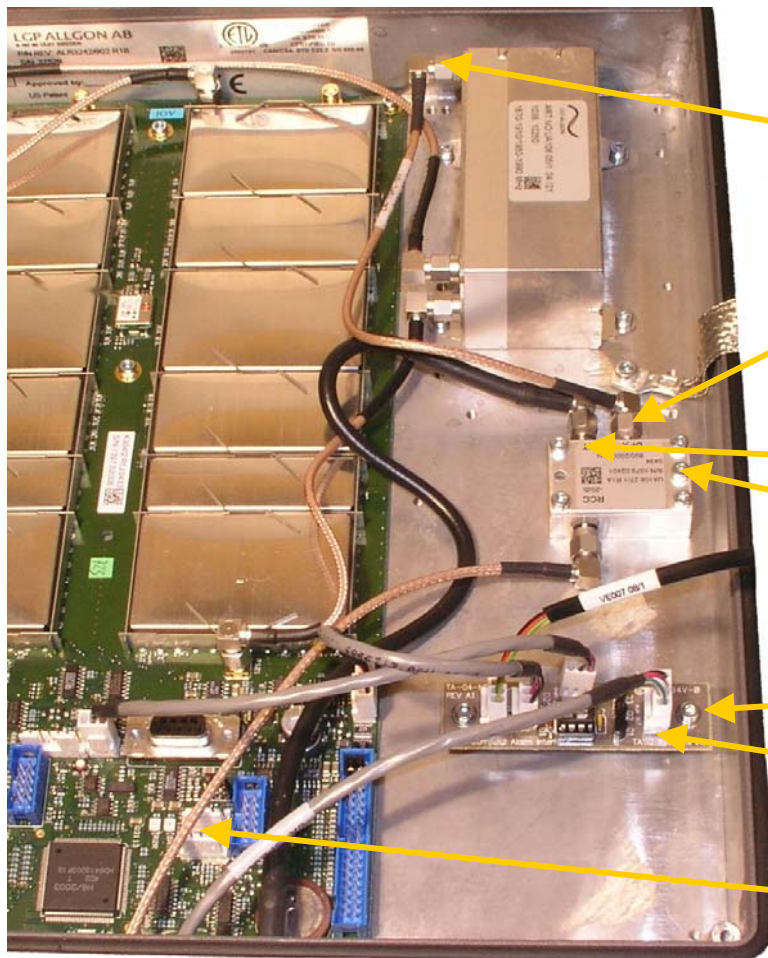




sitePORTAL Lite to Allgon Compact Repeater Alarm Board



Instructions:

Insert cable from DPX ANT. port to DPX port of the directional coupler

Connect the donor antenna port of the repeater to ANT of the directional coupler

Install the directional coupler using the M3 screw provided.

Install the alarm board with the M3 screws and nylon standoffs provided

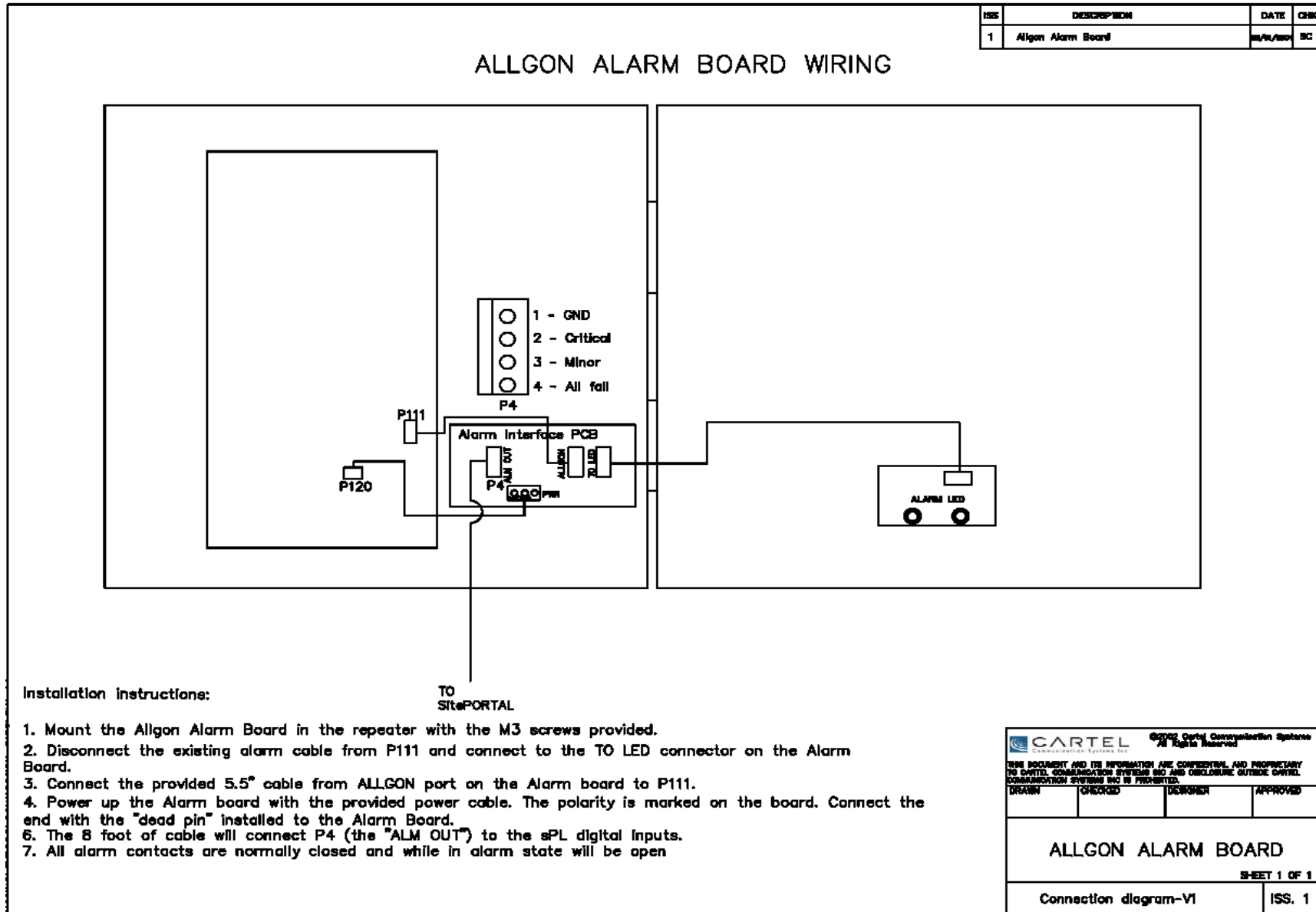
Connect ALM Output to sPL digital inputs (see next page)

Connect the 8 foot coaxial cable from the RCC connector of the directional coupler to the wireless modem in the sitePORTAL

sitePORTAL Lite to Allgon Compact Repeater Alarm Board

Quick Connect Guide

050-015-0030



Instructions are subject to change without notice. Please refer to TASC website for updates.
October 2004