



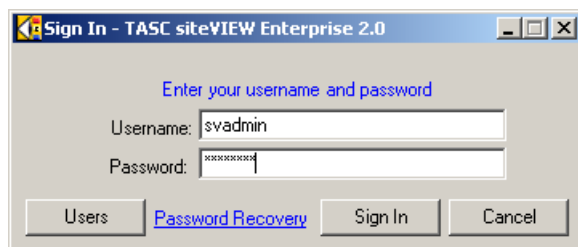
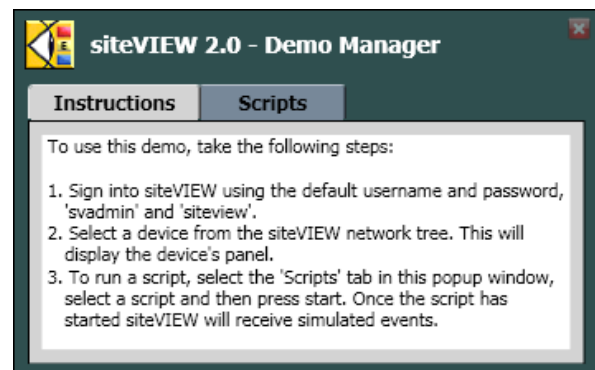
## siteVIEW 2.0 – Demonstration Software

The TASC siteVIEW 2.0 demo software is a modified version of the TASC siteVIEW Enterprise 2.0 software. The siteVIEW 2.0 demo software is intended to be used to easily demonstrate the key features of the siteVIEW 2.0 software by simulating hardware events using preset scripts. The siteVIEW 2.0 demo software cannot be used to monitor real hardware. This software is intended for demonstration purposes only and for that reason it does not require a TASC security key.

The TASC siteVIEW 2.0 demo software and the TASC siteVIEW Enterprise 2.0 software can be installed on the same computer without conflict. However, only 1 instance of the siteVIEW 2.0 client can run at any given time.

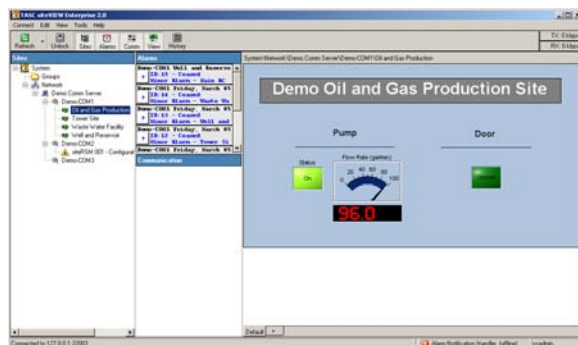
Install the demonstration software on a computer running a Windows 2000/XP/Vista/7 operating system and the Microsoft .NET Framework version 3.5.

Launch the siteVIEW 2.0 demo by selecting:  
**Programs->TASC->siteVIEW 2.0 – Demo Manager**  
from the start menu, or by double clicking on the **siteVIEW 2.0 – Demo Manager** icon located on the desktop.



When the demo manager launches, it automatically starts the siteVIEW 2.0 client.

Log into the siteVIEW 2.0 client with the default username, **svadmin**, and password, **siteview**.



Using the client, select a device from the network tree to view its corresponding panel.



**Demo Oil and Gas Production Site**

**Description:** This script simulates oil pump activity at an oil and gas production site.

**Total Running Time:** 22 seconds

**I/Os Used:**

- Input 01 = pump status (on/off)
- Input 02 = site door (open/closed)
- Analog 01 = flow rate (gal/min)

**Alarms:**

- when the site door opens a minor alarm occurs

**Sequence of Events:**

- 00 sec: Pump is on, the flow rate starts above the high threshold and the site door is closed.
- 05 sec: Pump turns off.
- 06 sec: As a result of the pump turning off, the flow rate decreases to below the high threshold.
- 07 sec: The flow rate decreases further to below the low threshold.
- 14 sec: Pump turns on and the flow rate increases to above the low threshold.
- 16 sec: The flow rate increases further to above the high threshold.

**siteVIEW 2.0 - Demo Manager**

Instructions | **Scripts**


- [-] Demo-COM1
  - Waste Water Facility
  - Tower Site
  - Oil and Gas Production**
  - Well and Reservoir

Start All | Stop All

Script

Start

Stop

Loop 

**0:00.000**

Within the Demo Manager, select the **Scripts** tab and select a device script from the list. Perform a left mouse click on the blue information icon to see details about the script. Press the **Start** button to play the script and simulate incoming events.

The device scripts demonstrate how the siteVIEW 2.0 system would respond in a real situation.

**Note:** Since the I/Os attached to the virtual devices are simulated, they do not function like real I/Os. For example, manually turning on the heater at *Demo Tower Site* will not cause the room temperature at the site to increase. However, in a real application, an output could be configured to turn on a heater to heat a room.

Initially after the install, the siteVIEW 2.0 demonstration software is configured with 1 communication service named *Demo Comm Server*, which comes equipped with 3 virtual communication ports named *Demo-COM1*, *Demo-COM2* and *Demo-Com3*. Each of the virtual communication ports have virtual devices attached to them. The devices attached to *Demo-COM1* are preconfigured with panels, alarms and scripts.

**Warning:** Do not delete or change the *Demo Comm Server*, *Demo-COM1* or any of the virtual devices or I/Os attached to *Demo-COM1* as doing so may result in the loss of the initial siteVIEW 2.0 demonstration software configuration and the scripts may not work properly.

To test the features of siteVIEW 2.0, feel free to make changes to *Demo-COM2*, *Demo-COM3* and any of the virtual devices attached to these ports. *Demo-COM2* has three virtual siteRSMs with addresses 1, 2 and 3 attached to it. *Demo-COM3* has 3 virtual siteRSMs with addresses 2, 5 and 9 attached to it.

**Note:** For more help with using the features of siteVIEW 2.0, press F1 from within the siteVIEW client to launch the context sensitive help.