



siteVIEW 2.0 Quickstart Guide for:



siteVIEW Enterprise 2.0



siteVIEW scope 2.0

This guide provides the steps on how to setup a single device on a newly installed siteVIEW Enterprise 2.0 or siteVIEW scope 2.0 software systems. This guide assumes the user has a local COM port connected to a properly connected TASC site monitoring device and that all the siteVIEW components will be installed on the same computer.

For information on how to setup other configuration options see the following documents:

- 050-015-0050 siteVIEW 2.0 User Manual
- 050-015-0061 TASC Serial to Ethernet User Manual
- 050-015-0054 Kenwood NEXEDGE™ Installation Guide
- 050-015-0046 Kenwood FleetSync™ 180 Series Radio to siteCOMMANDER Installation Guide

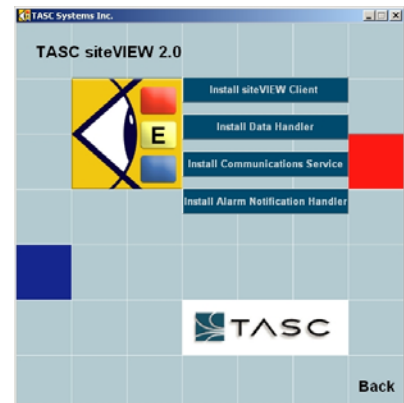
Quickstart Setup Steps

1. To run the siteVIEW 2.0 software, a siteVIEW 2.0 USB security key is required. Do not insert the siteVIEW 2.0 security key until after the Data Handler has been installed.
2. Install the four main siteVIEW 2.0 applications all on the same computer: the Data Handler, Communication Service, Alarm Notification Handler and Client GUI.
3. To install the siteVIEW 2.0 applications from a CD ROM, insert the CD into the CD drive and the auto-run menu should automatically launch. If the auto-run menu does not launch, browse the CD contents and manually launch the autorun.exe file located on the root director of the CD.
4. Insert the siteVIEW 2.0 USB security key into a free USB port on the installation computer. Windows will automatically install the drivers needed for the security key.

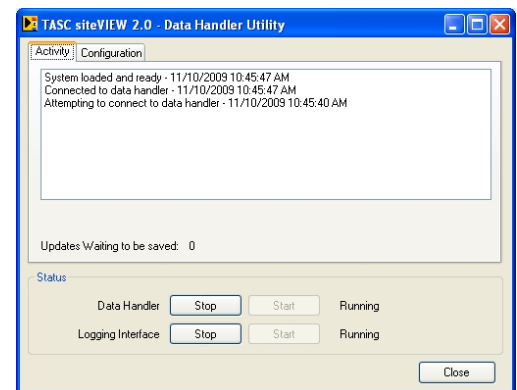




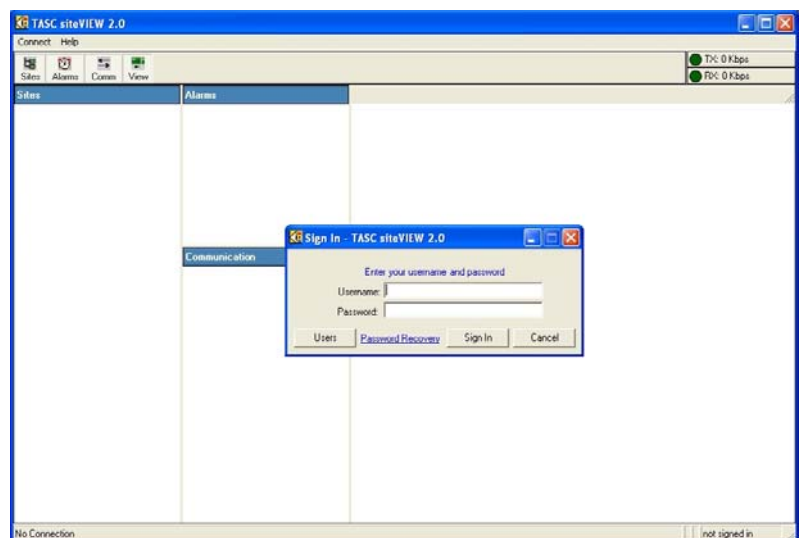
- Once the auto-run menu has been launched, select the siteVIEW 2.0 menu option. There will be four applications options to install. Install all of them for a stand-alone system. See the 050-015-0050 siteVIEW 2.0 User Manual for more information on setting up additional Client GUIs and Communication Services.



- After installing the Data Handler, the Data Handler Utility will launch automatically (or it can be launched from the start menu under "Program Files->TASC->Data Handler Utility"). Confirm that the activity tab shows that the system is loaded and ready, and that the status box shows that the Data Handler and Logging Interface are running. If either of these services is not running, then press the corresponding Start button.

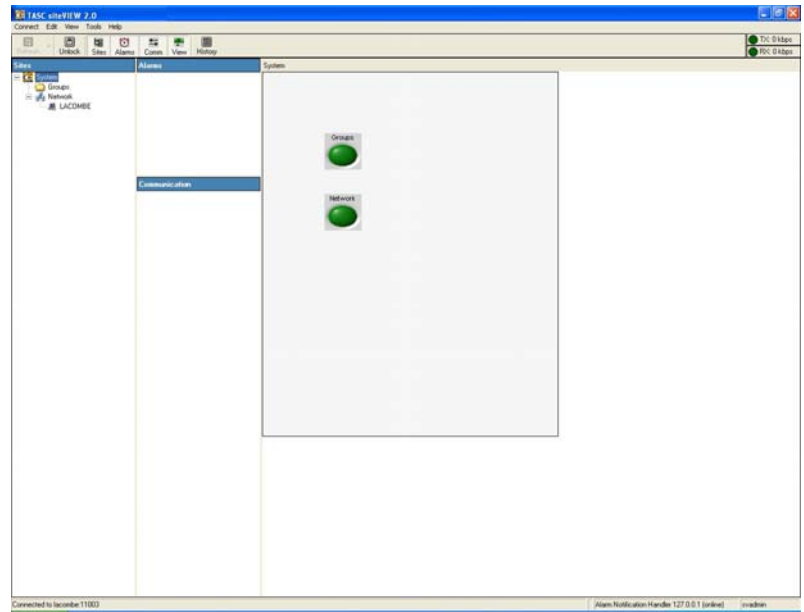


- Run the Client GUI from the desktop icon titled "siteVIEW 2.0" or from the start menu by selecting "Program Files->TASC->siteVIEW 2.0." The client will automatically check for an installed Data Handler on the local computer and if one exists, it will connect and then display a login screen. Sign in using the default username of *svadmin* and password *siteview*.

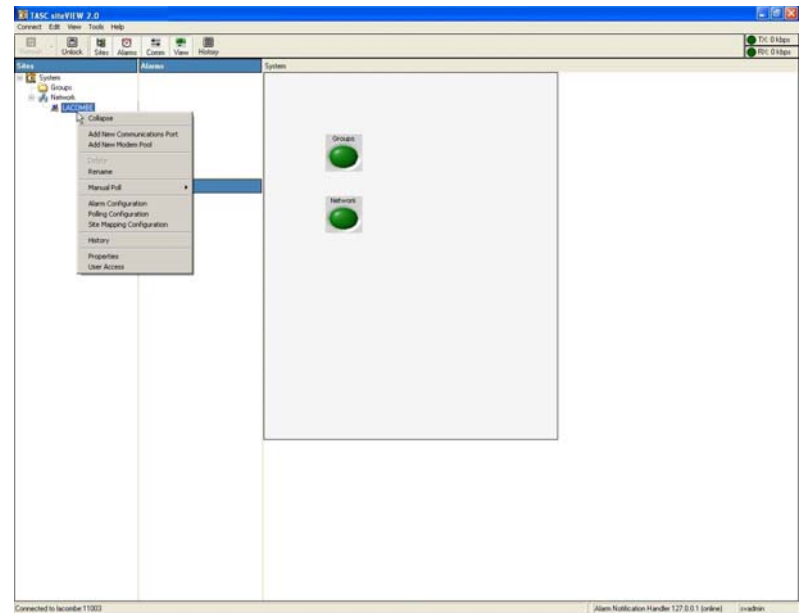




8. After signing in, you will be asked to provide an email address for password recovery purposes. Provide a valid email address and press ok. siteVIEW 2.0 will load with a default network tree on the left side of the screen. If the communication service was installed then you will see the communication service's computer name appear as an item in the network tree.

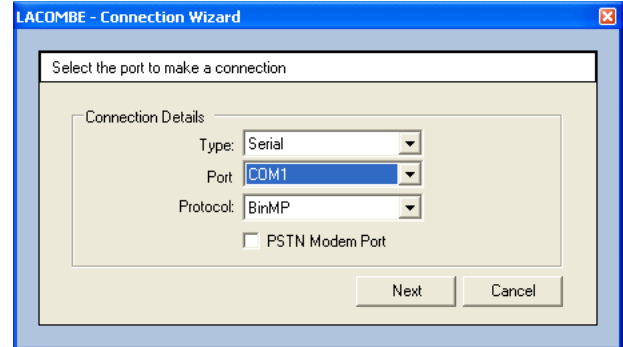


9. To add a communication port, right click on the communication service's tree item and select add new communications port.

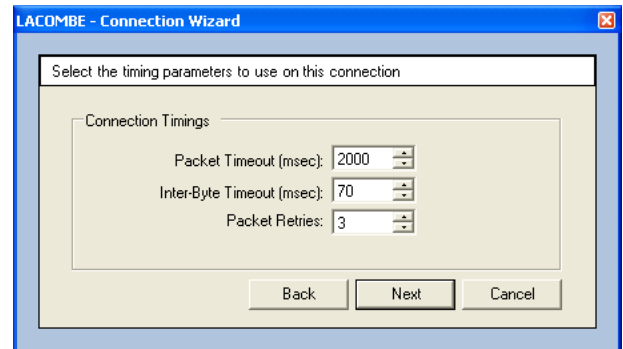




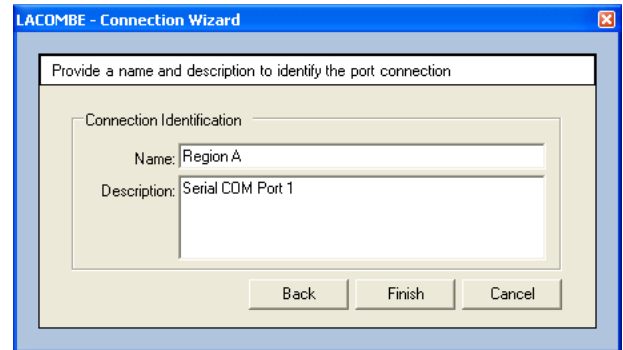
10. Select an available local port and press the next button.



11. Keep the default timing parameters and press the next button.

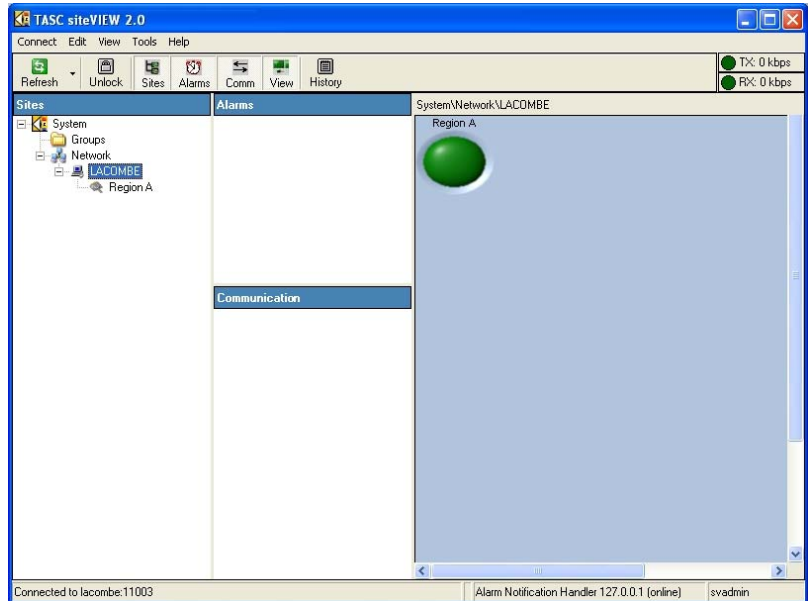


12. Enter a port name and description and press the finish button.



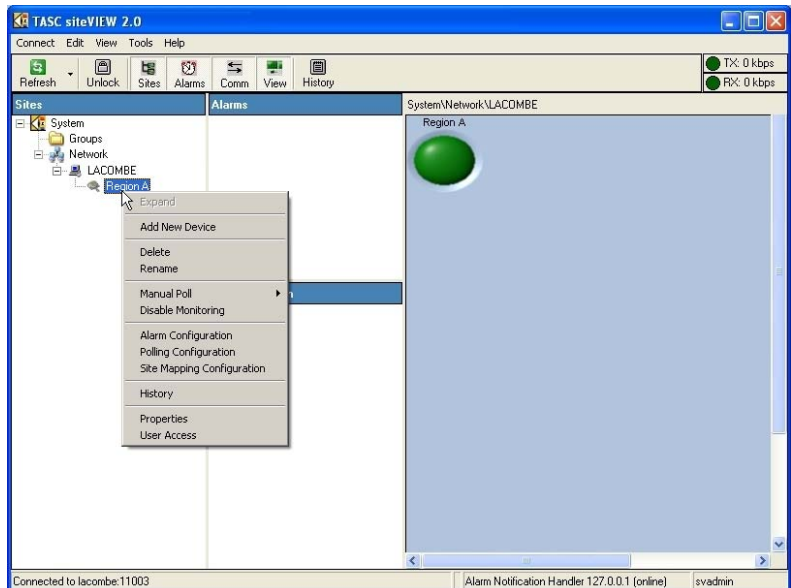


13. The newly added port will appear as an item in the network tree.



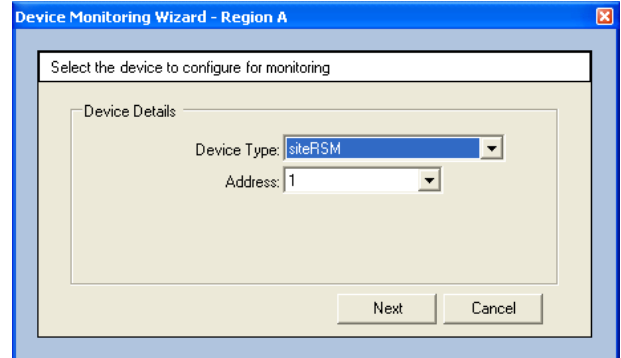
14. Before attempting to add a new device in siteVIEW, ensure the device is connected to the port, the connection link is properly set up, the device is powered On and that you know the applicable connection information for the device (ie. For a siteRSM you will need to know the device's Address. The default siteRSM device Address is 1).

15. To add a device to this newly created COM port, right click on the COM port's tree item and select add new device.

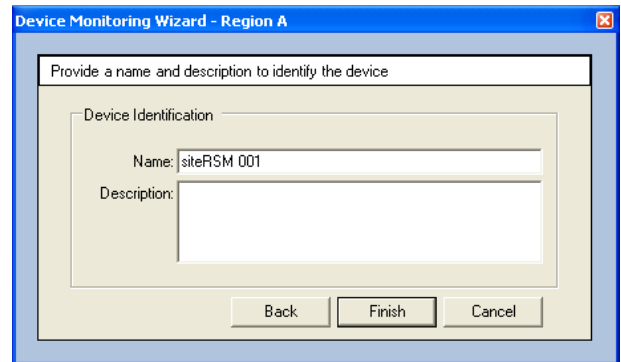




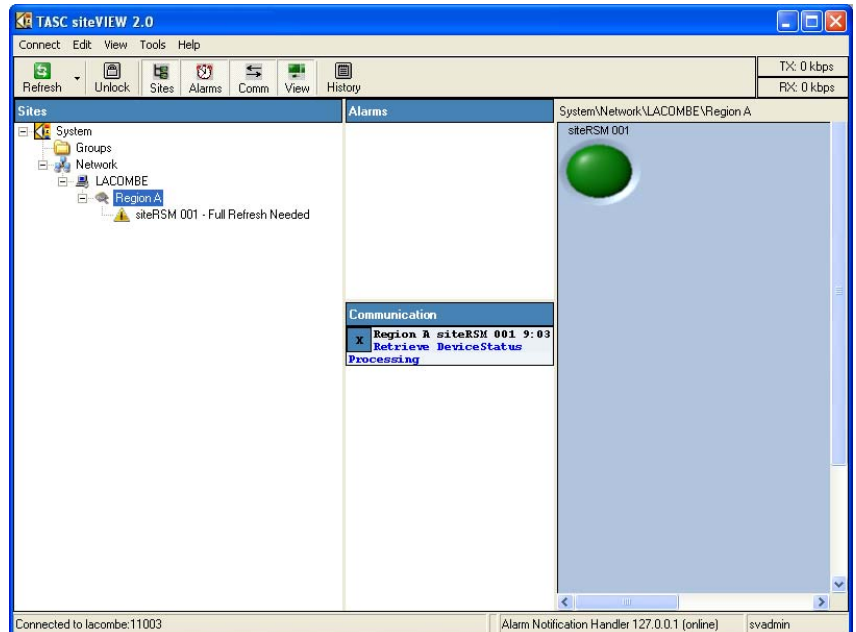
16. Specify the device's connection information and press next.



17. Next provide a name and details for the device, and select the finish button.



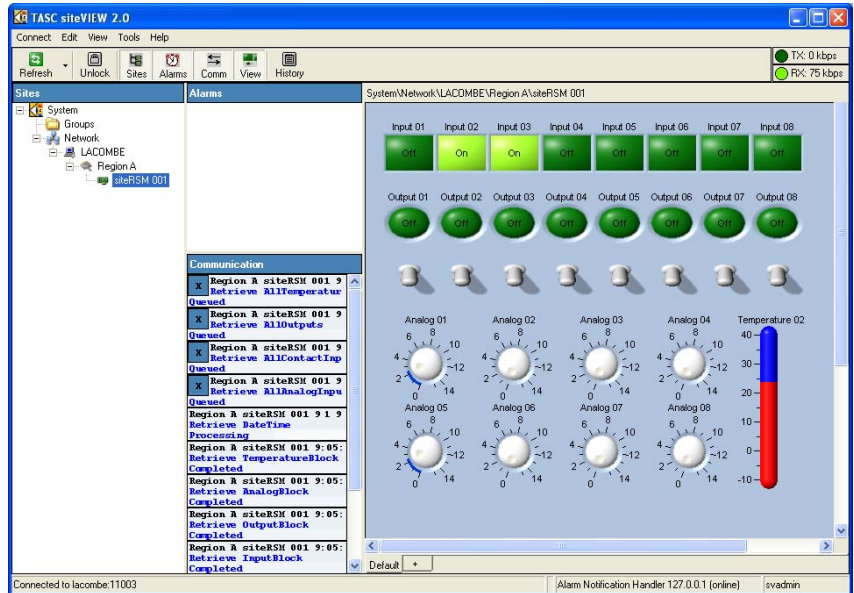
18. When the device is added, siteVIEW will attempt to communicate with the device by requesting the device's status. If the device status is retrieved successfully, then siteVIEW will proceed to download all of the required device configuration and status. Until the communication is complete, siteVIEW will indicate that a refresh is needed for that device.





19. Once the device configuration is downloaded, the device will no longer show any indication of requiring a refresh and a default panel will be made for the device.

20. After the device has been successfully added to the system, you can use the mouse to right click on the device's tree item and then set up the device's properties, polling configuration, alarm configuration and output mapping.



Review the 050-015-0050 siteVIEW 2.0 User Manual to further configure the siteVIEW Enterprise 2.0 or siteVIEW scope 2.0 systems