



## Allgon Repeater – sitePORTAL Lite

### Parts List

- Qty 1 sitePORTAL Lite (sPL) with mounting plate
- Qty 1 Remote Control Kit
  - Modem
  - Battery
  - Power Distribution (PD) Board
- Qty 1 SMA male to SMA male RG-316 RF cable
- Qty 4 M3 screws
- Qty 3 Molex Connector cables
  - Modem to PD Board 2-pin
  - Repeater 8-pin to PD Board 3-pin
  - PD Board 3-pin to sPL flying leads
- Qty 1 DB-15 cable with flying leads
- Qty 1 DB-9 to RJ-45 cable (modem to sPL)
- Qty 1 sitePORTAL Lite Configuration Utility (SPCU) CD-ROM

### Installation Instructions

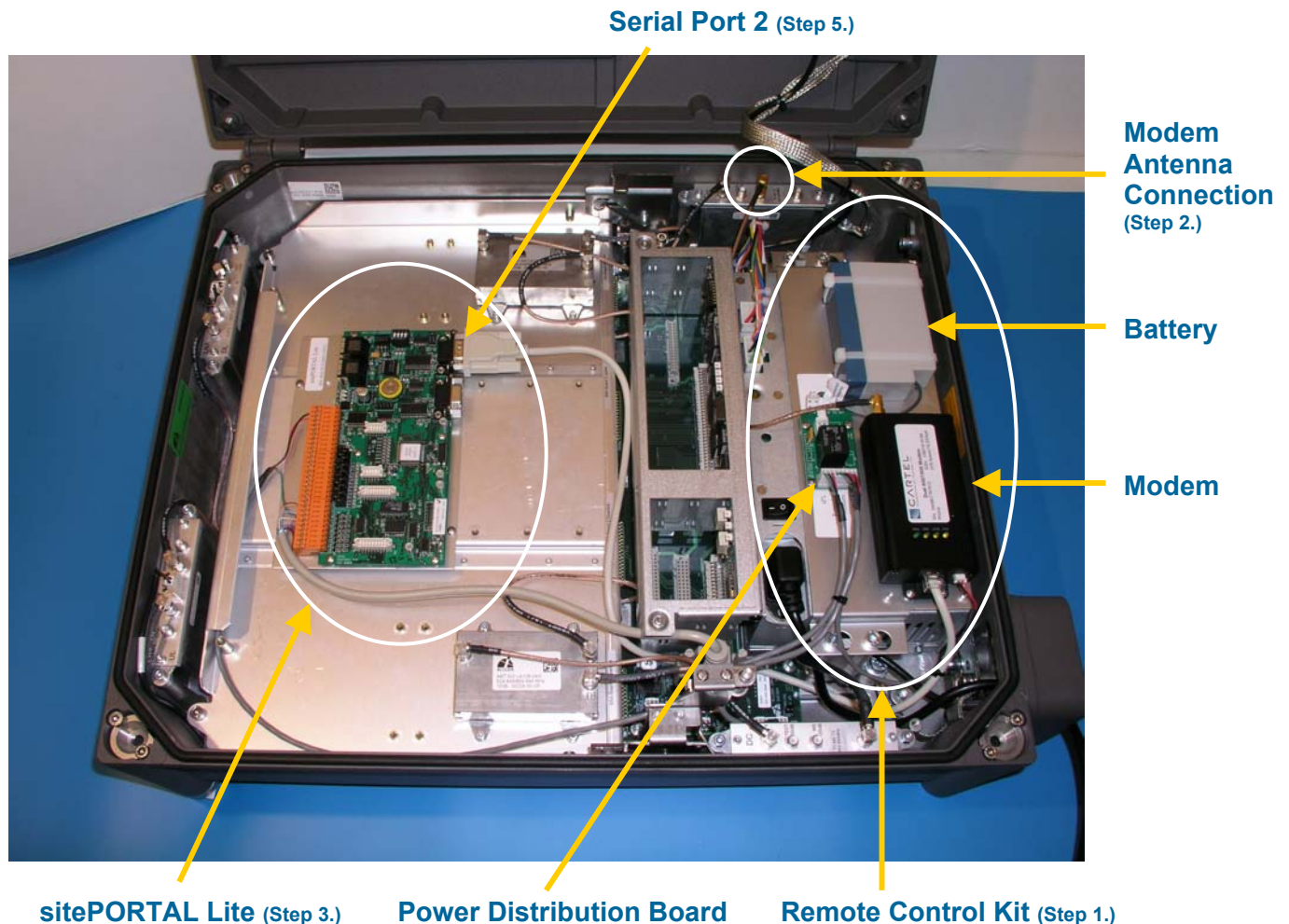
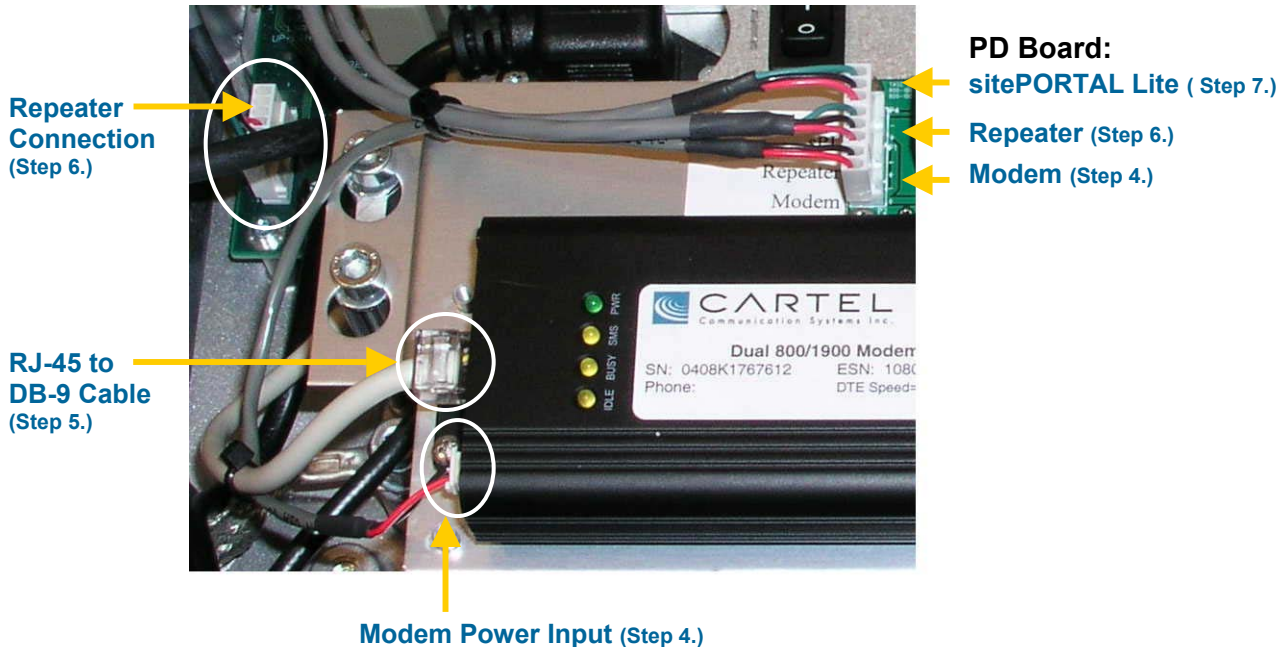


Figure 1: sitePORTAL Lite installation into an Allgon Repeater

1. Place the Remote Control Kit (RCK) into the repeater. Referring to Figure 1, as shown the RCK is situated on top of the power supply. It is fastened to the repeater with four screws (two on each side).
2. Connect the modem's antenna port to the repeater's MS -20dB port (donor side) with the supplied SMA Male to SMA Male RF cable.
3. Mount the sitePORTAL Lite (sPL) into the upper half of the repeater. Attach the sPL with mounting plate to the repeater using the supplied 4 M3 screws.



**Figure 2: PD Board, Modem, and Repeater Connections**

4. Connect the modem power cord from the PD board to the modem. Make sure to connect to the point labelled 'Modem' on the PD Board (refer to Figure 2).
5. Connect the RJ-45 to DB-9 cable from the modem to serial port 2 of the sPL.
6. Connect the 3-pin Molex to 8-pin Molex cable from the PD Board to P27 on the repeater. Make sure to connect to the point labelled 'Repeater' on the PD Board (refer to figure 2).
7. Connect the 3-pin Molex to flying leads cable from the PD Board to the sPL. The red wire is preinstalled into the (+) input of the sPL, the black wire is preinstalled into the (-) input of the sPL, and the green wire is preinstalled into the 8<sup>th</sup> digital input of the sPL.
8. Install the DB-15 cable with flying leads into P33 of the repeater. The flying leads connect to the sPL as follows:

DB-15	sitePORTAL Lite
Pin 1 (BLK)	Gnd
Pin 2 (BRN)	Gnd
Pin 4 (ORG)	Gnd
Pin 9 (GRY)	Digital Input 8*
Pin 10 (WHT)	Digital Input 7
Pin 12 (GRN)	Digital Input 6

*\*Note: Digital Input 8 on the sPL will have two wires connected – one from the PD board (green) and one from the DB-15 (gray).*

### sitePORTAL Lite Software Settings

- Using the sitePORTAL Lite Configuration Utility (SPCU), configure the digital inputs 6, 7, and 8. Input 7 is always open while the repeater is operational and input 6 can be configured in the repeater for any alarm condition. Input 8 is currently used as a connection point for connecting the enable wire from the PD Board to the repeater. Use the following figures 3, 4 and 5 to guide you.

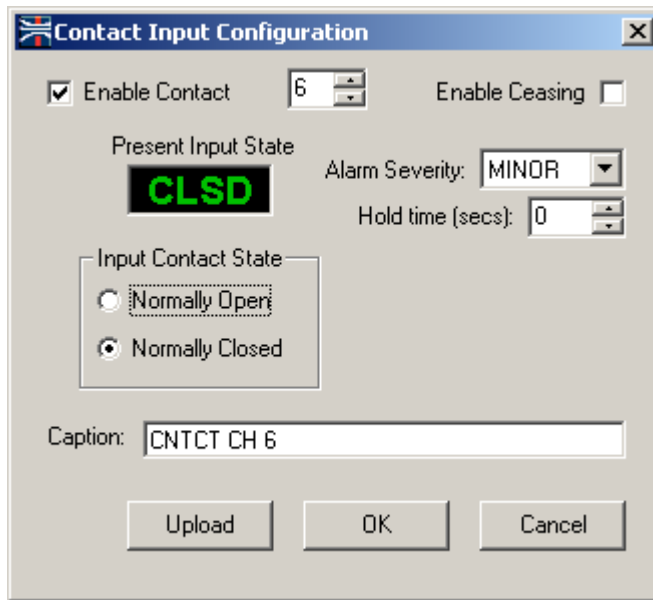


Figure 3: Digital input 6 configuration

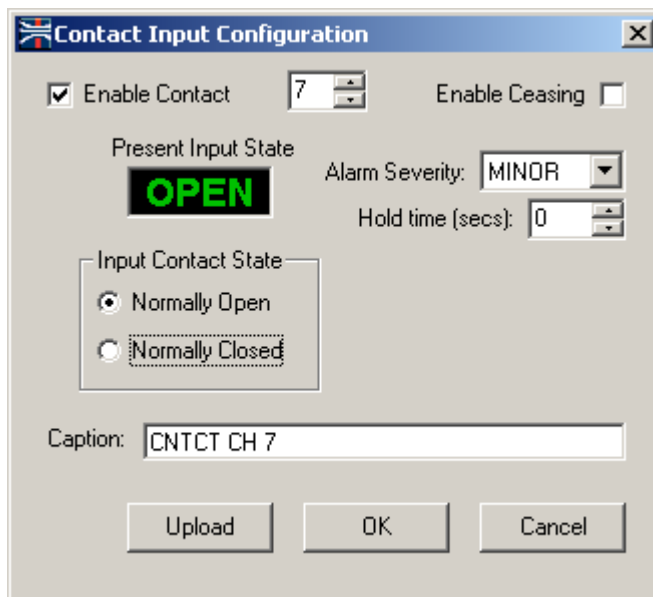


Figure 4: Digital input 7 configuration

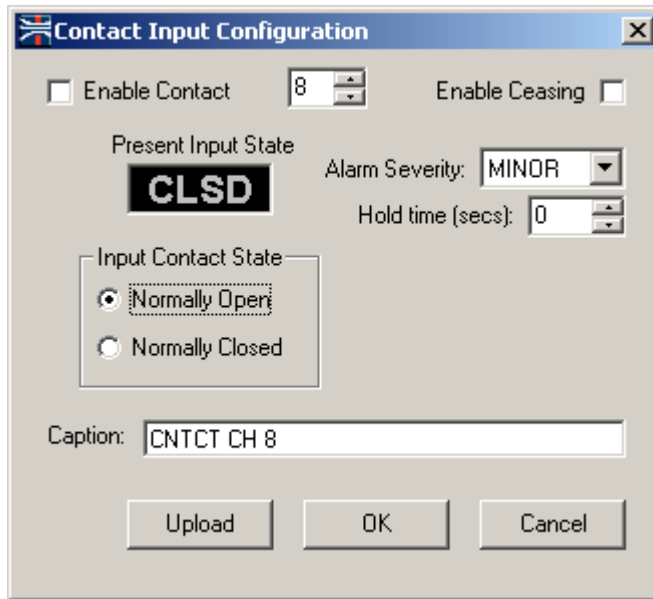


Figure 5: Digital input 8 configuration

- The following image has been included as a guideline to what should be shown under normal operation status.

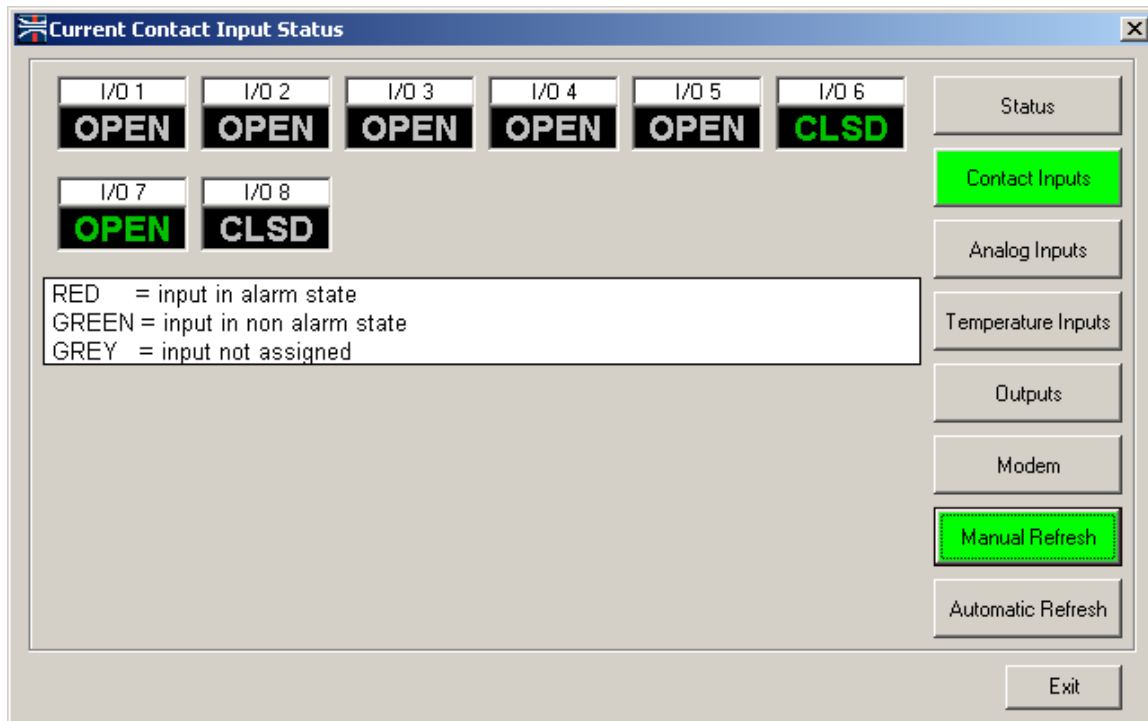


Figure 6: Normal operation status

Instructions are subject to change without notice. Please refer to TASC website for updates.  
October 2004