



siteVIEW Standard

Centralized Monitoring Software

Logging Addendum

Document #: 050-015-0020

Revision: R01

July 2004

TASC Systems Inc. • Langley, BC • Canada

Disclaimer

TASC Systems Inc. will not be held responsible for any damages, direct or indirect, arising from the use of our materials or from any other causes. Any liability whatsoever is hereby expressly limited to replacement or repair of defective materials.

This manual contains proprietary information that is the intellectual property of TASC Systems Inc. Reproduction, disclosure, modification or distribution, wholly or in part, without prior permission from TASC Systems Inc., is strictly prohibited.

TASC Systems is continuously working to improve system performance and expand product capabilities. Specifications and features contained within this document are subject to change and will be revised in the next edition of the manual.

For additional copies of this publication contact:

TASC Systems Inc.	Tel. (604) 455-2000
9415 – 202 Street	Fax. (604) 888-9712
Langley, BC V1M 4B5	Toll Free: 1-800-663-0070
Canada	Website: www.tascsystems.com

Document: 050-015-0020

Copyright 2002-2004 TASC Systems Inc., Langley, BC Canada

PREFACE

This document describes how to schedule, retrieve and view the siteCOMMANDER logs through the siteVIEW Standard software.

Hardware and software described in this document is subject to on going development and improvement. Consequently there may be minor discrepancies between the information in this document and the performance and design of the hardware and software.

Refer to the siteCOMMANDER – User Manual (document number 050-015-0002) for detailed instructions on the siteCOMMANDER and its installation



Before connecting any equipment to siteVIEW Standard, it is advised to read the Administrator's and Operator's manuals.

PREFACEIII

LIST OF FIGURES..... V

REVISION LOG..... VI

1. OVERVIEW7

2. VIEWING SITE LOGGING8

2.1. SITE VERSION DETECTION 8

2.2. SITE LOGGING..... 8

LIST OF FIGURES

Figure 1 – siteVIEW Main Form	8
Figure 2 - Site Logging Form.....	10
Figure 3 - Logging Update Scheduling.....	10

REVISION LOG

- 050-015-0020R01 – First Commercial Release

1. OVERVIEW

Revision three of the TASC *siteCOMMANDER* hardware, with firmware version 3.00 or greater, offers logging features that were not present in previous versions of the *siteCOMMANDER*. TASC *siteVIEW* version 1.5.2.35 is the first version to implement the site logging features available from the *siteCOMMANDER*. This document's purpose is to explain these changes to *siteVIEW*.

2. VIEWING SITE LOGGING

2.1. Site Version Detection

When siteVIEW polls for the status of a *siteCOMMANDER*, the firmware version located on the *siteCOMMANDER* is determined. If the *siteCOMMANDER*'s firmware is the correct version, and if siteVIEW successfully connected to the *siteCOMMANDER*, siteVIEW will display a link for viewing the site logging. This link can be found once a site node is selected.

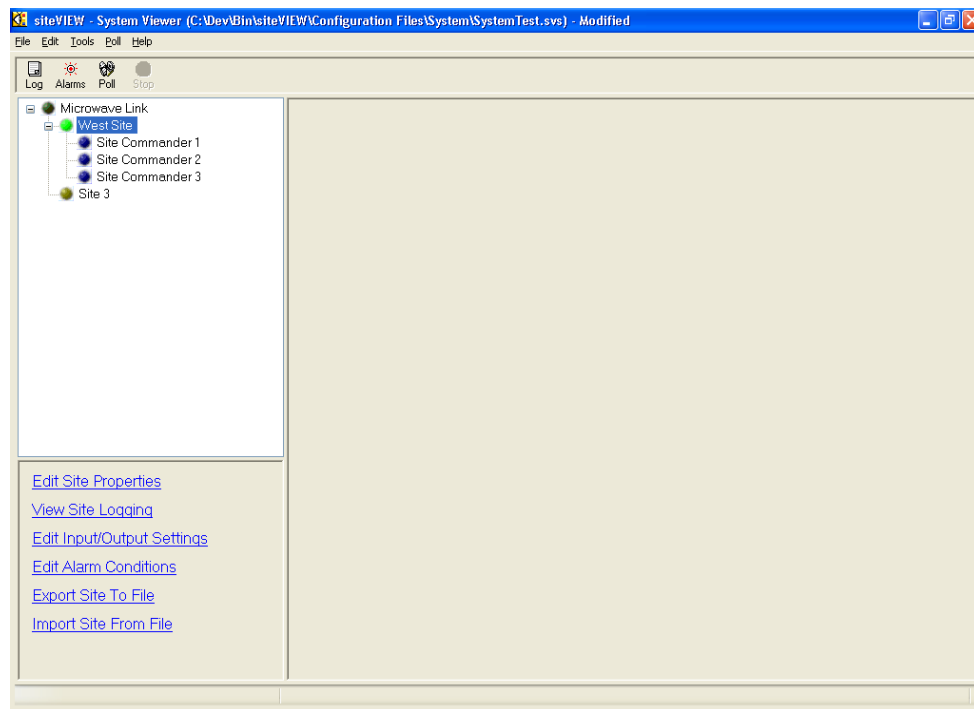


Figure 1 – siteVIEW Main Form

In Figure 1, the site node “Remote Site 1” is selected (highlighted), the site is active and the “View Site Logging” link is visible in the Command Panel.

2.2. Site Logging

From the site logging form, a user can view the logging that takes place on a particular site. Once this form is opened, the site's date and time is downloaded from the site. The site's accumulated Carrier Operated Squelch

(COS) Activity is also downloaded from the site. These values may not be refreshed when you first open the site logging form. After a few seconds this information should update automatically. You can force these values to be refreshed by pressing the “Refresh” button located in the COS Activity group box.

The majority of the site’s logging configuration must be set up using the siteCOMMANDER Configuration Utility (SCCU). siteVIEW offers minimal configuration and is intended for monitoring purposes only.

Site Date/Time: This displays the current date and time of the site. You may set a new value and press the “Set Time” button to change this date and time. After changing this value, siteVIEW will download the new site date and time from the site. If the date time change was unsuccessful, the calendar date will reset to the date it was before you tried to set the date.

Data Logger Values: If configured to do so, *siteCOMMANDER* will log values for selected analog channels every minute. This configuration must be done using SCCU. Automatic downloading of these data logs may be enabled or disabled from siteVIEW by setting up a schedule. If *siteCOMMANDER* logging is enabled and the site is included in polling, siteVIEW will download the sample data at the user specified times and save the values to a comma separated value (.csv) file. You may view this log by pressing the “View Log” button. Pressing the “Update Log” button forces the log to be downloaded and immediately and the results are saved to the log file.

Analog Min/Max Values: If configured to do so, *siteCOMMANDER* will record min/max values for all analog channels. If enabled from siteVIEW, these min/max values will be downloaded every hour and saved to a comma separated value (.csv) file. You may view this log by pressing the “View Log” button. Pressing the “Clear” button clears the min/max values. Pressing the “Update Log” button forces the log to be downloaded and immediately and the results are saved to the log file.

COS Activity: The COS Activity shows the accumulated Carrier Operated Squelch (COS) activity time of the FFSK module, since the date* shown.

Options Menu: The options menu has options that allow you to hide the “Site Date/Time” and to keep the form as the topmost form.

*Note: All dates shown and recorded are the site's system date and not the computer.

Figure 2 - Site Logging Form

Schedule Button: There are two schedule buttons -- one for scheduling the download of data logs and one for updating the min/max values. Pressing one of these two buttons opens a window as shown in figure 3.

Scheduled Log Update Enabled (Check Box): Turn on/off scheduled log updates. You must also add schedule dates that specify when the system is to be polled.

Scheduled Log Update Time (Drop Down Box and Numeric Entry Field): Enter the day of the week and time of day the scheduled log update is to take place.

Scheduled Log Update Schedule (List Box): This displays a list of all scheduled log updates. You may add or remove scheduled log updates from the list. If no scheduled log updates exist in the list, scheduled log updating acts as though it were disabled.

Retry Failed Scheduled Updates Every (Drop Down Box): If a scheduled log update fails, this option signifies when the scheduled log update should be reattempted. The system only retries a failed scheduled update 3 times before quitting.

Figure 3 - Logging Update Scheduling