



siteVIEW Standard

Centralized Monitoring Software

Operator's Manual

050-015-0019

Revision: R02

July 2004

TASC Systems Inc. • Langley, BC • Canada

Disclaimer

TASC Systems Inc. will not be held responsible for any damages, direct or indirect, arising from the use of our materials or from any other causes. Any liability whatsoever is hereby expressly limited to replacement or repair of defective materials.

This manual contains proprietary information that is the intellectual property of TASC Systems Inc. Reproduction, disclosure, modification or distribution, wholly or in part, without prior permission from TASC Systems Inc., is strictly prohibited.

TASC Systems is continuously working to improve system performance and expand product capabilities. Specifications and features contained within this document are subject to change and will be revised in the next edition of the manual.

For additional copies of this publication contact:

TASC Systems Inc.	Tel. (604) 455-2000
9415 – 202 Street	Fax. (604) 888-9712
Langley, BC V1M 4B5	Toll Free: 1-800-663-0070
Canada	Website: www.tascsystems.com

Document: 050-015-0019

Copyright 2002-2004 TASC Systems Inc., Langley, BC Canada

PREFACE

This document describes the installation, commissioning and operation of TASC Systems' *siteVIEW Standard* Centralized Monitoring Software.

Hardware and software described in this document is subject to on going development and improvement. Consequently there may be minor discrepancies between the information in this document and the performance and design of the hardware and software.

Refer to the siteCOMMANDER User Manual (050-015-0002) for detailed instructions and examples of how to configure and install siteCOMMANDER modules.



Before connecting any equipment to any siteVIEW product, it is advised to read this document and the Administrator's Manual in their entirety before proceeding.

PREFACE	III
TABLE OF FIGURES	V
REVISION LOG	VI
1. OVERVIEW	7
1.1. WHAT IT DOES	7
1.2. WARNINGS	7
2. STARTING SITEVIEW	8
2.1. DONGLE (SOFTWARE KEY)	8
2.2. LAUNCHING THE APPLICATION	8
2.3. OPENING SITEVIEW SYSTEM FILE	9
2.3.1. Poll	10
2.3.2. Poll (Forced Configuration Refresh)	10
2.3.3. No Poll	10
3. MODULES	11
3.1. SYSTEM VIEWER	11
3.1.1. Network View	11
3.1.2. Monitor and Control Panel	12
3.1.3. Command Panel	13
3.2. ALARM PANEL	13
3.2.1. Active Alarms	14
3.2.2. Network Site	14
3.2.3. Status	14
3.2.4. Message	15
3.2.5. Instructions	15
3.2.6. Response Box	15
3.3. ALARM POP-UP REPORT	15
3.4. LOG VIEWER	16
4. GENERAL USE	18
4.1. POLLING	18
4.2. VIEWING REMOTE SITE CONTENTS	18
4.3. RESPONDING TO AN ALARM	19
4.4. ACCESSING THE ALARM VIEWER	19
4.5. ACCESSING THE LOG VIEWER	20

TABLE OF FIGURES

Figure 1 - A System with a Control Computer, Gateway Interface and 6 Stations (Sites).....	7
Figure 2 - Clicking siteVIEW icon.....	8
Figure 3 - Empty System Viewer.....	9
Figure 4 - Selecting the file menu.....	9
Figure 5 - Locating the system file.....	10
Figure 6 – Selecting polling options.....	10
Figure 7 - System Viewer.....	11
Figure 8 - Network View.....	11
Figure 9 - Red LED.....	12
Figure 10 - Yellow LED.....	12
Figure 11 - Green LED.....	12
Figure 12 - Black LED.....	12
Figure 13 - Blue LED.....	12
Figure 14 - Monitor and Control Panel.....	13
Figure 15 - Command Panel.....	13
Figure 16 - The Alarm Viewer button.....	13
Figure 17 - Alarm Viewer.....	14
Figure 18 - Network Site box.....	14
Figure 19 - Status box.....	14
Figure 20 - Message box.....	15
Figure 21 - Instructions box.....	15
Figure 22 -- Response box.....	15
Figure 23 – The Alarm Pop-Up Report.....	16
Figure 24 - Log button.....	16
Figure 25 - Log Viewer.....	16
Figure 26 - The Poll & Stop buttons.....	18
Figure 27 - Selecting a site.....	18
Figure 28 - Panel window.....	19
Figure 29 - Alarm Status window.....	19
Figure 30 - ALARM button.....	19
Figure 31 - Accessing the Alarm Viewer.....	20
Figure 32 – LOG button.....	20
Figure 33 -- Sorting log data.....	21
Figure 34 -- Filtering log events and alarms.....	21

REVISION LOG

050-015-0019R01

- Original Document
- Added Content
- Added Section, headers and footers

050-015-0019R02

- Current Document
- Re-formatted based on template
- Repaired broken sections and page number

1. OVERVIEW

1.1. What it does

SiteVIEW is the central monitoring and control software for the *siteCOMMANDER* line of products. It allows an operator to monitor, via a PC workstation, a network of remote locations or sites. These remote sites can contain numerous types of equipment. (Figure 1)

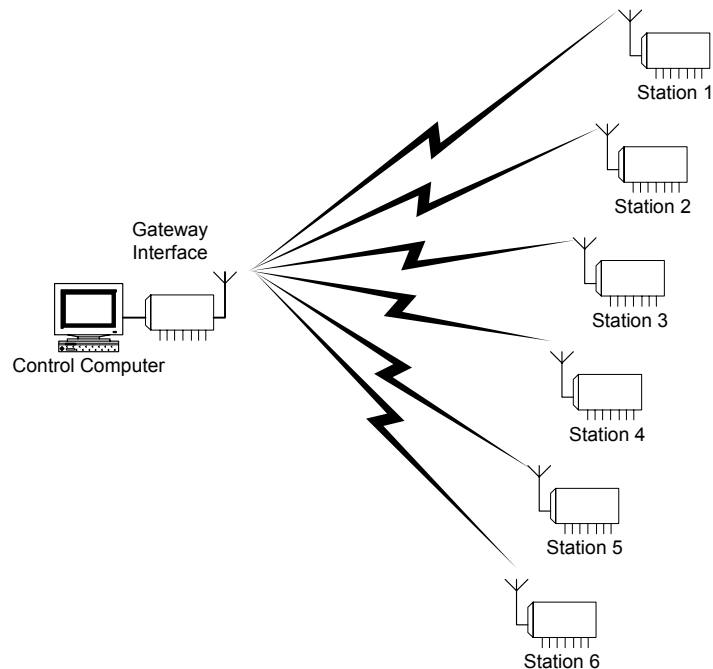


Figure 1 - A System with a Control Computer, Gateway Interface and 6 Stations (Sites)

1.2. Warnings

WARNING! Do not modify any settings without first checking with an Administrator.



WARNING! It is crucial that siteVIEW be left running at all times unless otherwise determined by an administrator. Please do not close siteVIEW as remote monitoring will cease

2. STARTING SITEVIEW

2.1. Dongle (Software Key)

siteVIEW can either be run in demonstration mode or in standard mode. If you want to run siteVIEW in standard mode, you will need a siteVIEW dongle. The dongle is a software key that uses USB technology and allows access to the siteVIEW standard monitoring features. If a siteVIEW dongle is not present while siteVIEW is running, siteVIEW will detect the missing dongle and will then operate in demonstration mode.

If a dongle is present and still siteVIEW will only run in demonstration mode, then ensure the dongle is fully inserted. If the dongle is properly inserted and siteVIEW continues to run in demonstration mode, then restart your computer. If after a restart, siteVIEW still only allows demonstration mode, then contact technical support.

2.2. Launching the Application

To start siteVIEW double click with the left mouse button on the siteVIEW desktop icon (Figure 2 - Clicking siteVIEW icon).

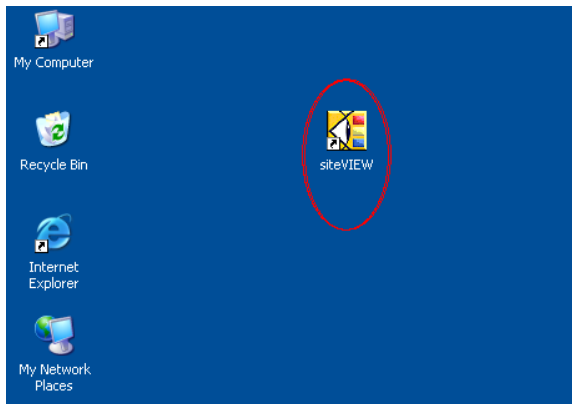


Figure 2 - Clicking siteVIEW icon

Once siteVIEW has loaded you will be presented with system viewer (Figure 3 - Empty System Viewer).

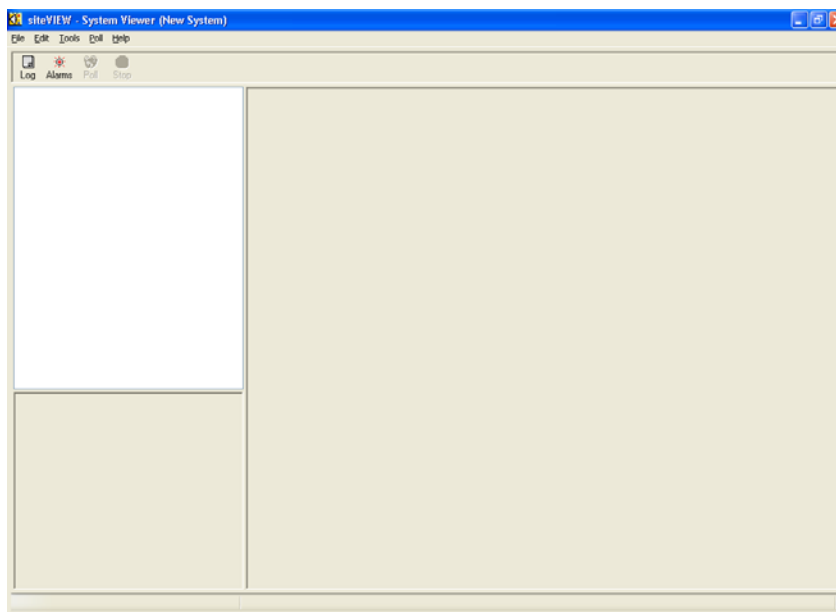


Figure 3 - Empty System Viewer

2.3. Opening siteVIEW System File

After siteVIEW has started running it will be necessary to load the siteVIEW system file that has been created and named accordingly by your administrator.

The siteVIEW system file contains input, output, alarm and network site settings and information. It is only necessary to reload the system file if siteVIEW has just been restarted.

To load the desired system file, click on the **FILE** menu. (Figure 4)

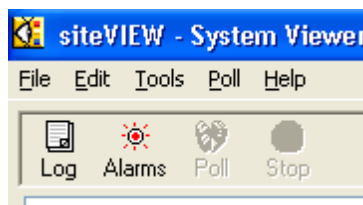


Figure 4 - Selecting the file menu

Then select the **OPEN** submenu where you can locate the appropriate siteVIEW system file and then click on the **OPEN** button. (Figure 5)

After loading the siteVIEW system file the screen you will be prompted with an OPEN OPTIONS form. (Figure 6)

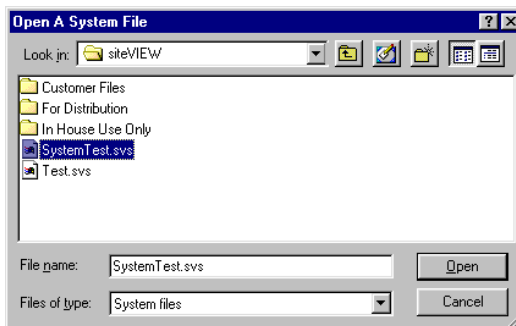


Figure 5 - Locating the system file

2.3.1. Poll

This causes siteVIEW to poll the remote network sites once after completely loading the system file.

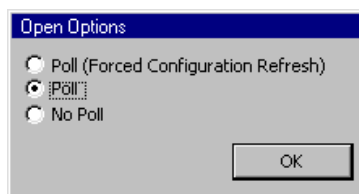


Figure 6 – Selecting polling options

NOTE: Continuous polling is an option available in the POLLING menu under POLLING OPTIONS

2.3.2. Poll (Forced Configuration Refresh)

This is the default option and is used to refresh siteVIEW configuration with the *siteCOMMANDER* configuration. This option is to be used by an administrator.

2.3.3. No Poll

This will cause the system file to open without any polling of the remote sites.

The sitePORTAL Lite main module provides interfacing for 8 digital 'contact' inputs capable of accepting contact closures such as passive switches and relays as well as active devices. The module also provides 8 'open drain' FET output channels suitable for driving a wide range of loads, such as relays, indicators and contactors. A 10-bit A/D converter provides an eight-channel interface for reading analog voltages. The main module also has an eight-channel temperature sensor bus. Optional temperature sensors are available.

After making your selection click the **OK** button and siteVIEW will now populate the empty module windows with the network view, sites and panels

3. MODULES

3.1. System Viewer

The *siteVIEW*'s System Viewer is the main interface to your *siteVIEW* System. The System Viewer is displayed at *siteVIEW* startup (Figure 7 - System Viewer).

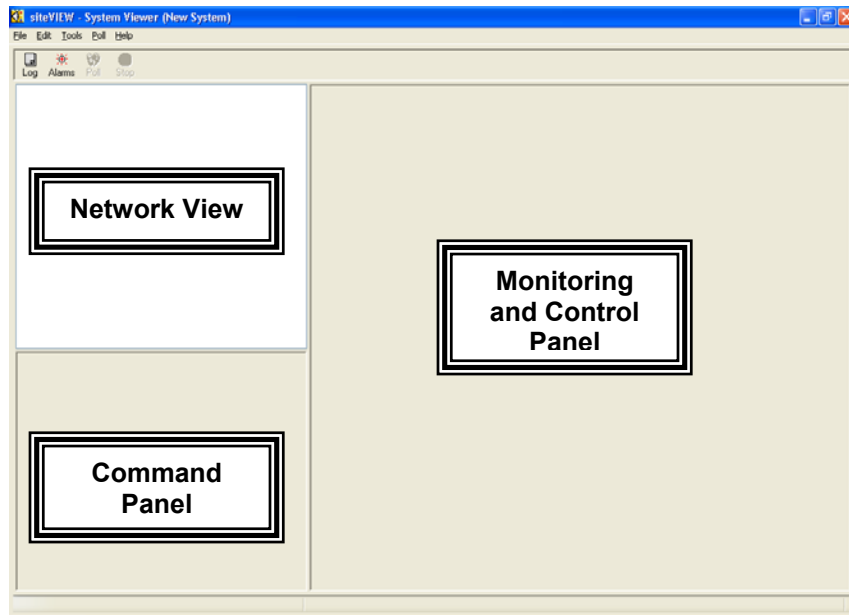


Figure 7 - System Viewer

3.1.1. Network View

The Network View contains a visual of all the sites available through the current system file (Figure 8 - Network View).

The network is displayed in an expandable/collapsible tree format similar to the Windows Explorer utility

This panel will vary depending on the number and configuration of remote sites. Each site component has a colored LED associated with it, which indicates the current condition of the network, site or panel.

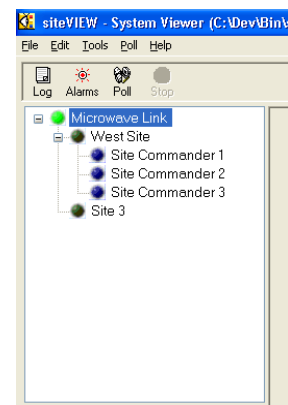


Figure 8 - Network View

A red LED indicates that the Network or Site is down and not communicating. (Figure 9 - Red LED).



Figure 9 - Red LED

A yellow LED indicates that the Network or Site has not been checked for communication (Figure 10 - Yellow LED).



Figure 10 - Yellow LED

A green LED indicates that communication is successful with the Network or Site (Figure 11 - Green LED).



Figure 11 - Green LED

A black LED indicates that the panel is not enabled for Monitoring and Control (Figure 12 - Black LED).



Figure 12 - Black LED

A blue LED indicates that the panel is enabled for Monitoring and Control (Figure 13 - Blue LED).



Figure 13 - Blue LED

3.1.2. Monitor and Control Panel

The Monitor and Control Panel contain all the instrumentation for monitoring a remote site. (Figure 14)

There are a wide variety of available components that the administrator will use to setup a system file.

Components function like their physical counterparts. For example switches can be turned off and on and displays move according to input.

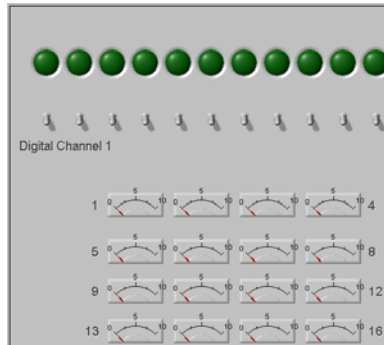


Figure 14 - Monitor and Control Panel

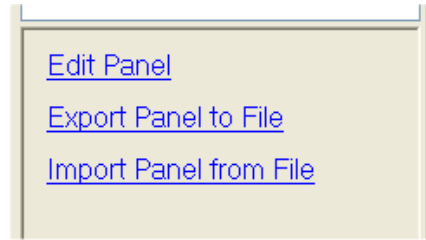


Figure 15 - Command Panel

3.1.3. Command Panel

The Command Panel is provided for a system administrator only. It is not to be used by operators. (Figure 15)

3.2. Alarm Panel

The Alarm Viewer can be accessed through the Alarm button along the lower toolbar (Figure 16 - The Alarm Viewer button).



Figure 16 - The Alarm Viewer button

The Alarm Viewer provides the operator with detailed explanations of alarms.

The Alarm Viewer consists of six boxes and a CLOSE button.

The six boxes are:

- Active Alarms
- Network and Site
- Status
- Message
- Instructions
- Response

3.2.1. Active Alarms

This lists the alarms that have been triggered. Alarms are grouped according to their severity. Alarms in each severity group will be listed with the most recently triggered alarms at the top of the list.

- Active Alarms are displayed in a Bold Font
- Ceased Alarms are displayed in a Regular Font
- Acknowledged Alarms are displayed in an Italic Font

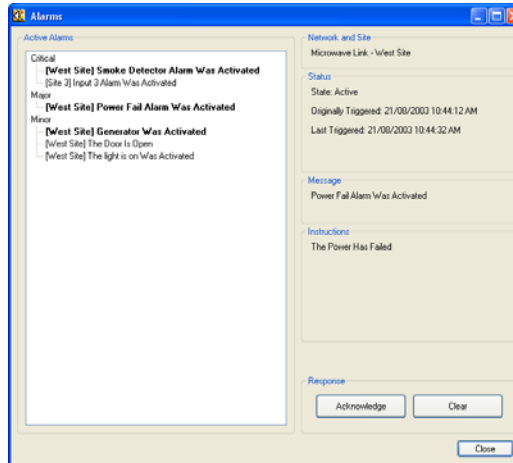


Figure 17 - Alarm Viewer

3.2.2. Network Site

The Network Site displays the network and site names for the currently selected alarm (Figure 18 - Network Site box).



Figure 18 - Network Site box

3.2.3. Status

The Status box displays the following information: (Figure 20)

State: Whether the alarm is active or ceased

Originally Triggered: The time when the alarm was first triggered

Last Triggered: The time when the alarm was last triggered

Ceased: The time when the alarm ceased (Only applicable if the alarm is ceased)

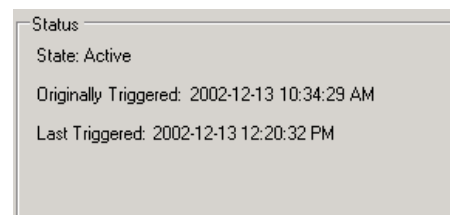


Figure 19 - Status box

3.2.4. Message

The Message box displays the condition that caused the alarm to be triggered. (Figure 20 - Message box)

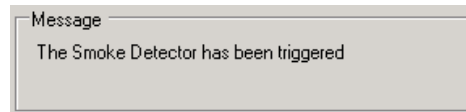


Figure 20 - Message box

3.2.5. Instructions

The Instruction box contains instructions on how to respond to the alarm. (Figure 21 - Instructions box)

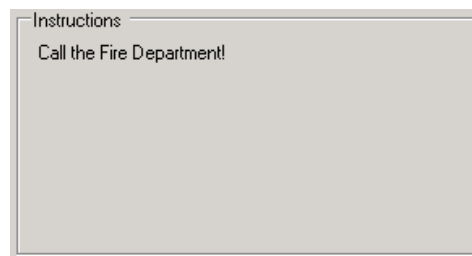


Figure 21 - Instructions box

3.2.6. Response Box

The response box contains 2 buttons, the **ACKNOWLEDGE** and the **CLEAR** (Figure 22 -- Response box).

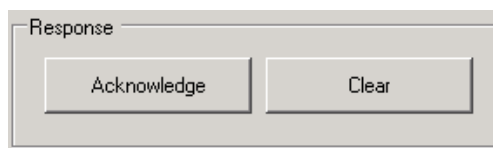


Figure 22 -- Response box

ACKNOWLEDGE (Button):

Click on this button to acknowledge an alarm. Acknowledging the alarm will create a log entry indicating that the alarm has been acknowledged. This will also cause the alarm to appear in italics in the Active Alarm box

CLEAR (Button):

Click on this button to clear an alarm. Clearing an alarm will create a log entry indicating that the alarm has been cleared. This will remove the alarm from the active alarm box.

3.3. Alarm Pop-Up Report

The Alarm Pop-Up Report immediately reports important alarm information when an alarm is triggered.

By default, the Alarm Pop-up Report will appear whenever the alarm is triggered. Even if you are in another program (such as Microsoft Word), the Alarm Pop-Up report will appear to inform you of an alarm condition.

Alarm Severity (LED and Label): These display the severity of the *most severe alarm*.

Alarm Message (Link Label): This displays the message and the severity of the *most recently triggered alarm*. Clicking on this link will show you alarm details for this alarm in the *Alarm Viewer Form*.



Figure 23 – The Alarm Pop-Up Report

3.4. Log Viewer

The Log Viewer allows you to view the log file for your system (Figure 25) and can be accessed through the **LOG** button on the lower toolbar (Figure 2



Figure 24 - Log button

Log Table: The Log Table lists all the current logged events. The Log Table loads the log entries whenever the Log Viewer Form is loaded. Click on a column header to sort the list using that column.

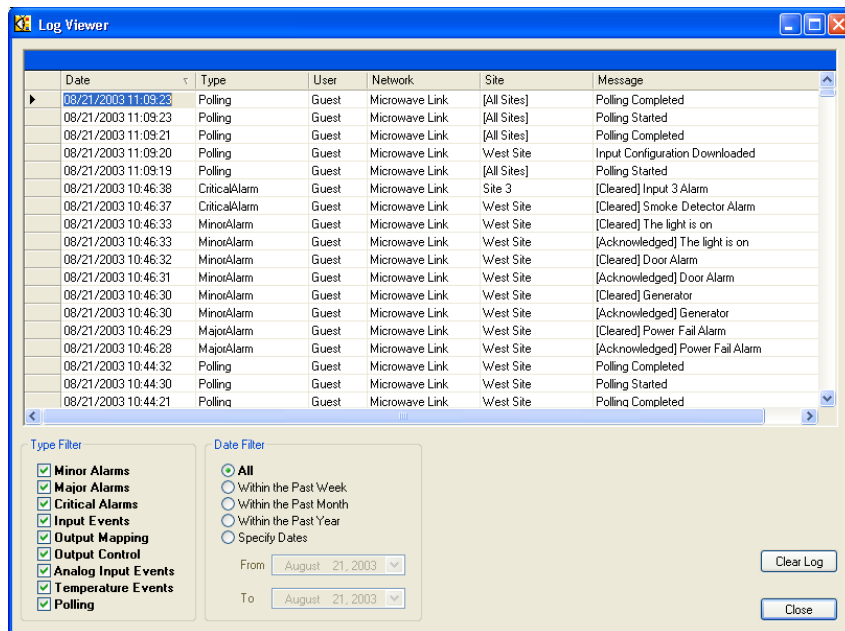


Figure 25 - Log Viewer

Type Filter: The Type Filter selects which logs are viewed in the table. A checked log type means that it is viewable in the Log Table. An unchecked log type means that it is not viewable in the Log Table.

4. GENERAL USE

The basic operation of siteVIEW consists of polling and monitoring for alarms. If alarms arise, it is important to know how to identify and respond with the appropriate action.

4.1. Polling

To perform a manual poll at any time click on the **POLL** button located on the lower toolbar (Figure 26 - The Poll & Stop buttons). To Cancel the poll or any current communication, click on the **STOP** button located on the lower toolbar.

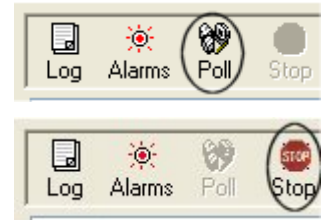


Figure 26 - The Poll & Stop buttons

4.2. Viewing Remote Site Contents

To view the remote site contents highlight the desired site in the Network View and left click on it (Figure 27 - Selecting a site).

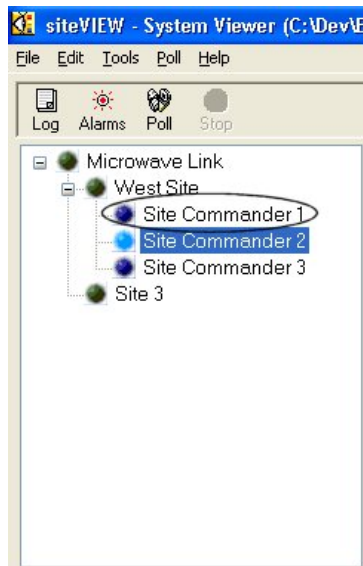


Figure 27 - Selecting a site

This will display a panel relating to all the equipment and instrumentation assigned to this site in the Panel Window (Figure 28 - Panel window).

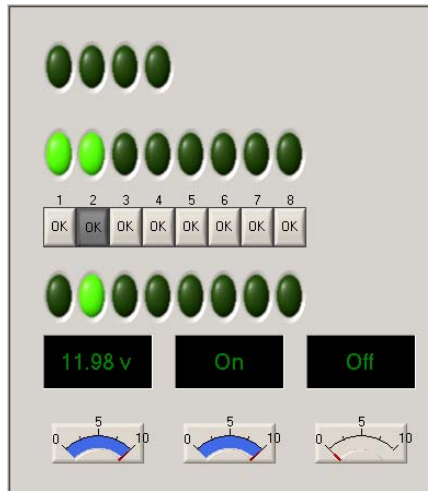


Figure 28 - Panel window

4.3. Responding To An Alarm

When an alarm is triggered the alarm status will flash indicating both the severity and current alarm and location.



Figure 29 - Alarm Status window

4.4. Accessing The Alarm Viewer

There are two easy ways to access the Alarm Viewer once an alarm is noticed. The first is through the **Alarm Pop-Up Report** and the other is the **ALARM** button located on the lower toolbar (Figure 29 - Alarm Status window).



Figure 30 - ALARM button

To access the Alarm Viewer through the Alarm Pop-Up Report click on the blue linked text in the window (Figure 31 - Accessing the Alarm Viewer). This

will take you to the Alarm Viewer and highlight the alarm displayed in the Alarm Pop-Up Report.



Figure 31 - Accessing the Alarm Viewer

You can also access the Alarm Viewer at any time by clicking on the **ALARM** button located on the lower toolbar. This will take you to the Alarm Viewer and highlight the most recent alarm.

4.5. Accessing The Log Viewer

To Access the Log Viewer left click on the LOG button located on the lower toolbar (Figure 32 – LOG button).



Figure 32 – LOG button

The Log Viewer is used to keep track of all alarms and events. It is essentially a database that contains six fields or headings used to organize the alarms into manageable data.

The six heading are:

- Date: Events and alarms are stamped with a date and time
- Type: Describes the severity of the alarm
- User: The current logged on operator
- Network: Shows which network the alarm or event is located on
- Site: Shows which site on that network is sending the event or alarm
- Message: A brief description of what the alarm means

The data can be sorted by any of the six headings by left clicking on the heading itself. (Figure 33 -- Sorting log data)

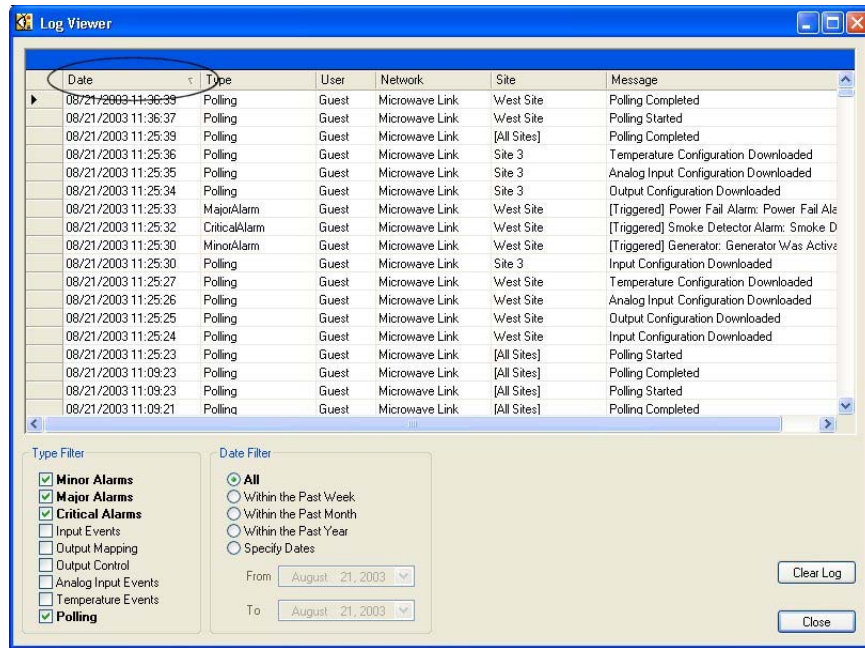


Figure 33 -- Sorting log data

It is also possible to filter out certain types of events or alarms by using the *Type Filter* window (Figure 34 -- Filtering log events and alarms).

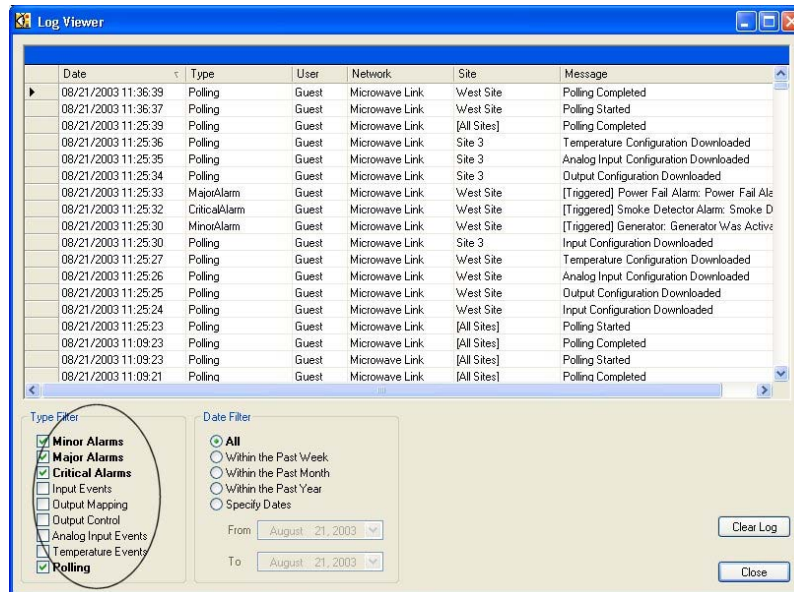


Figure 34 -- Filtering log events and alarms

To filter something out of the log uncheck the box and those types of events or alarms will be removed. Simply re-check the box to return the events and alarms.